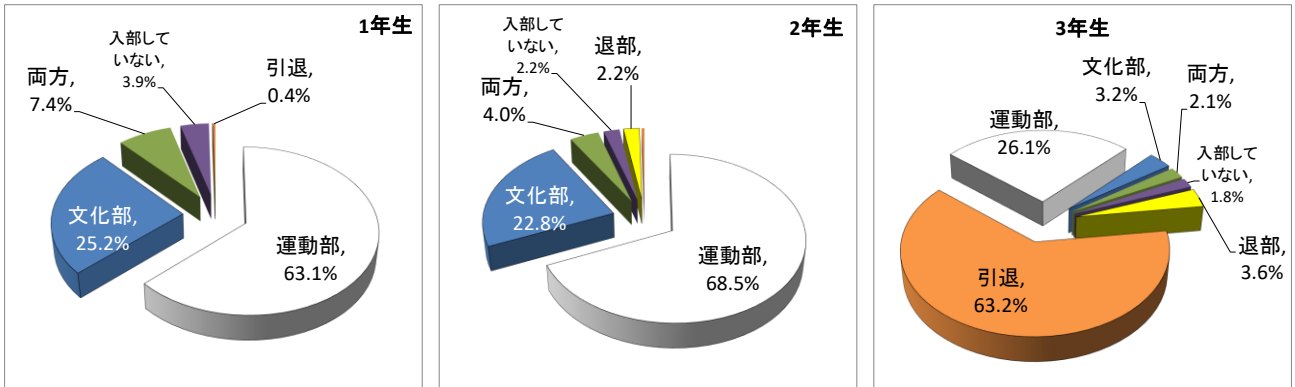
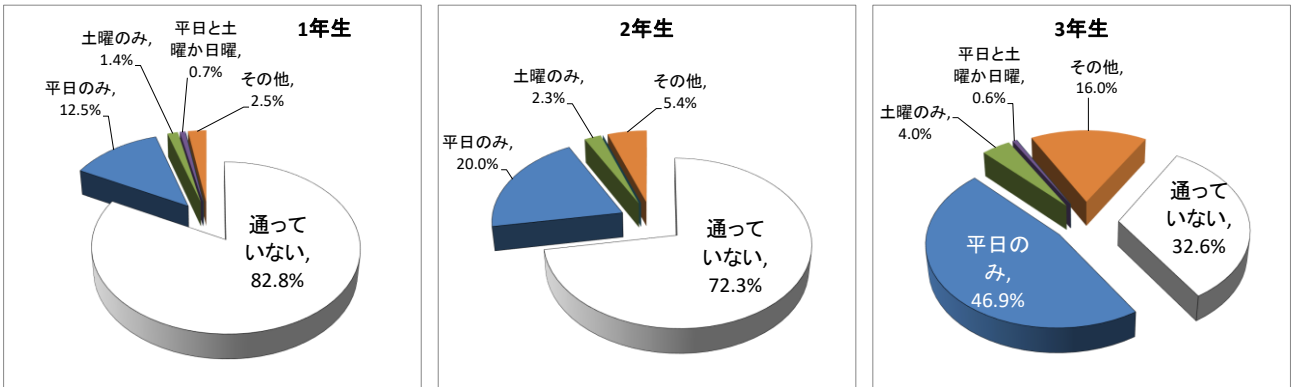


令和3年度第1回生徒実態調査結果 令和3年7月実施

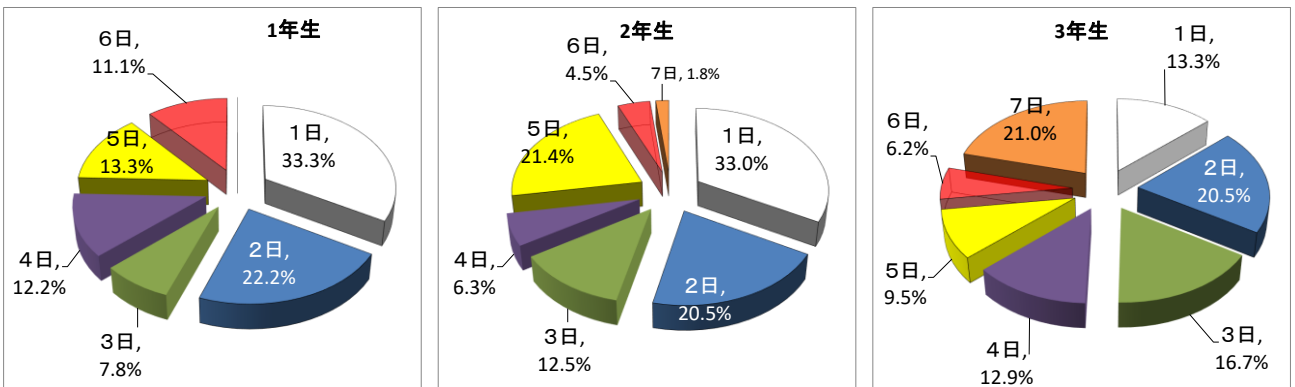
1 部活動加入状況



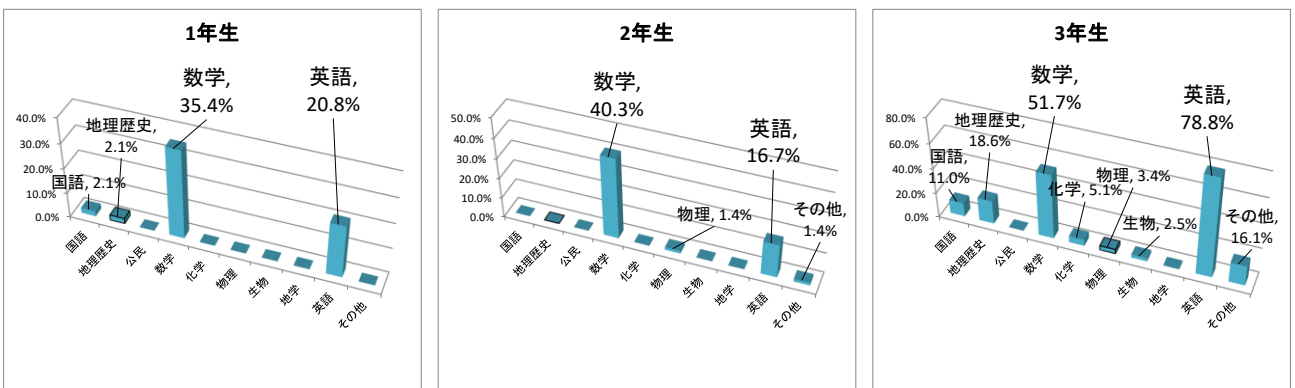
2 通塾率



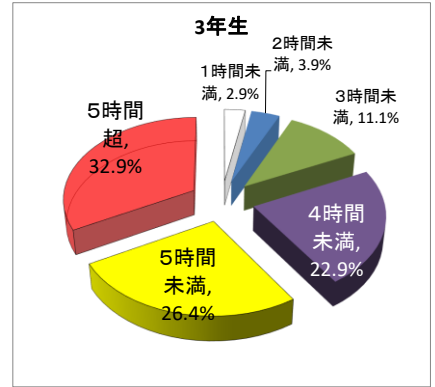
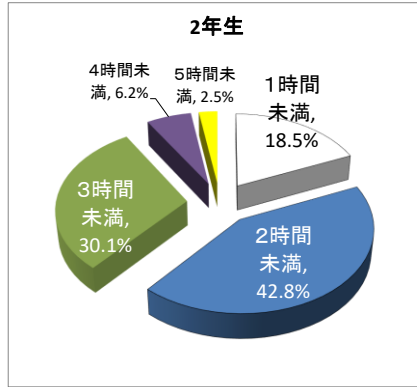
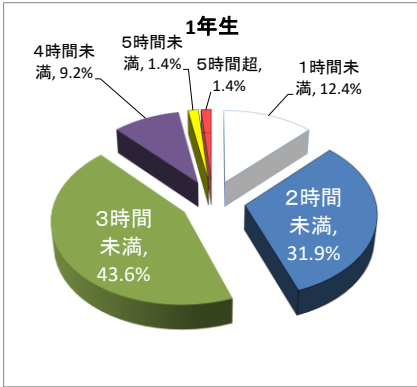
2-2 通塾者の週当たりの通塾日数



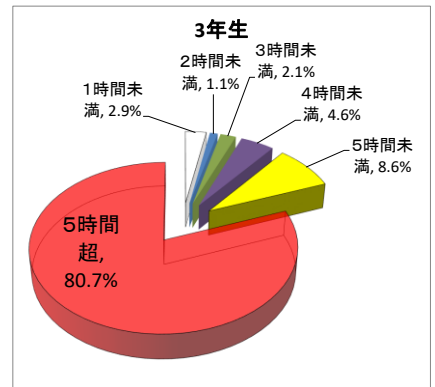
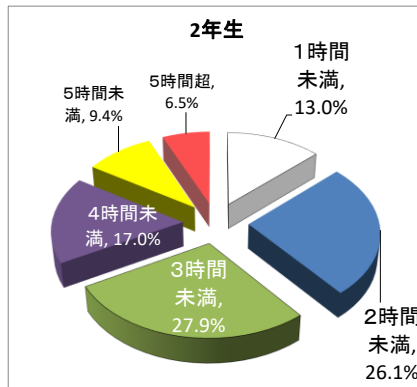
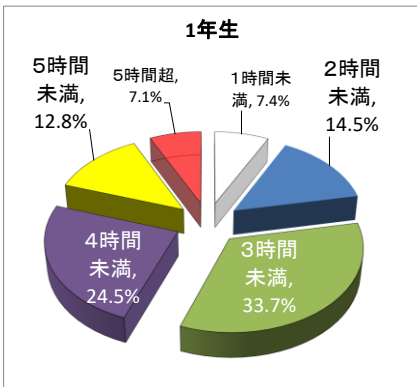
2-3 通塾者の受講教科・科目(複数回答)



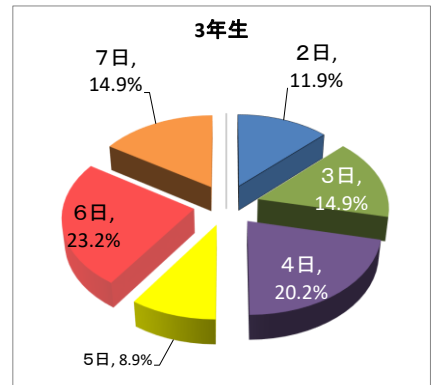
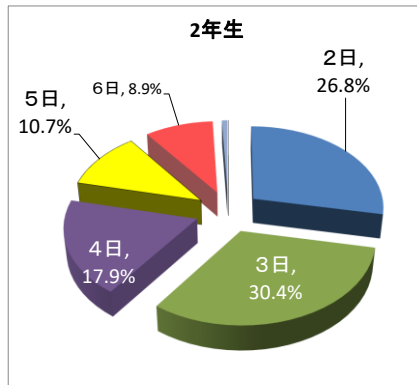
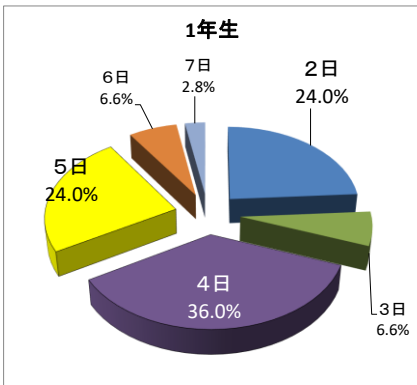
### 3 自学自習の時間 平日



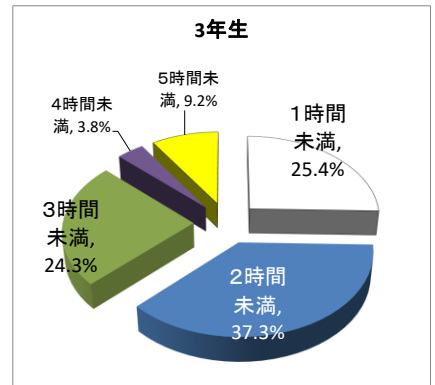
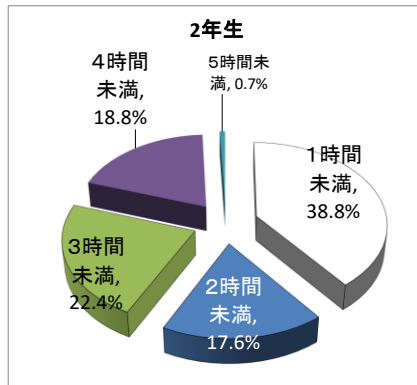
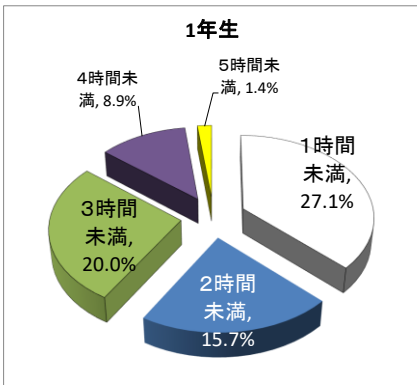
### 3-2 自学自習の時間 日曜・祝日



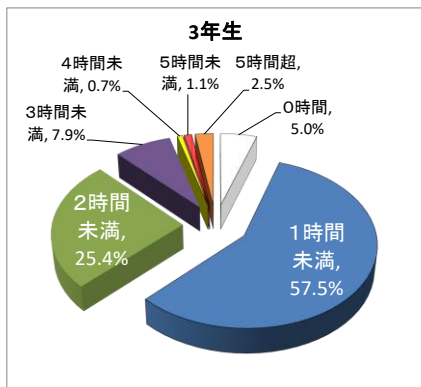
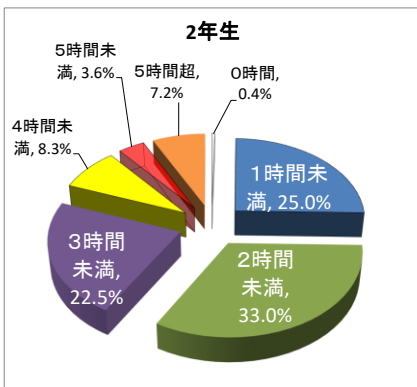
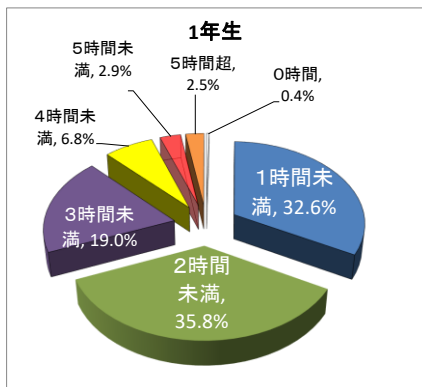
### 4 自習室利用者の週当たりの利用日数



### 4-2 自習室利用者の週当たりの利用時間



5 1日当たりのSNSの利用状況



5-2 SNSでのトラブル

