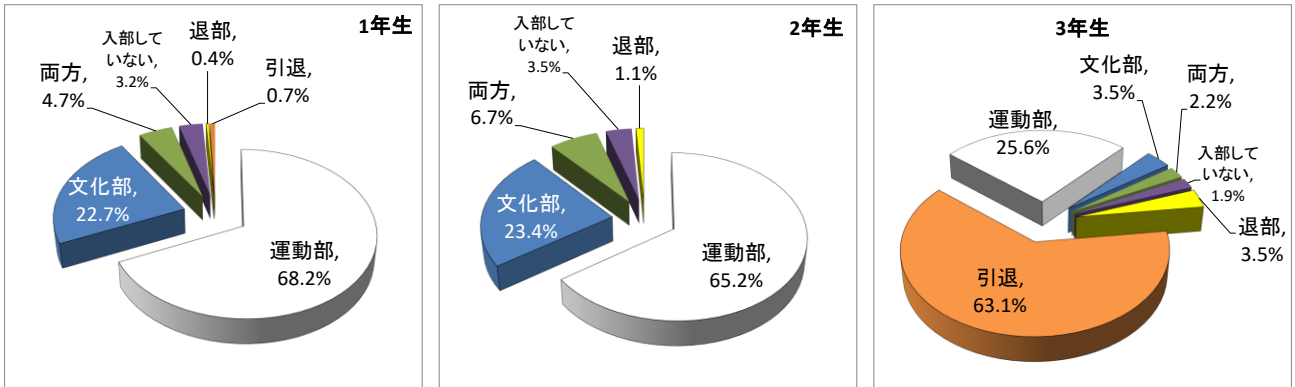
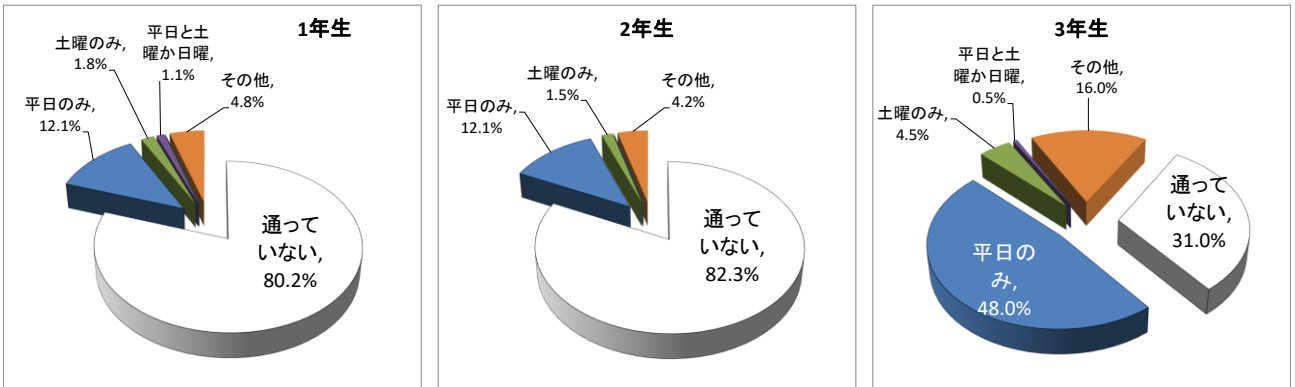


令和2年度第1回生徒実態調査結果 令和2年9月実施

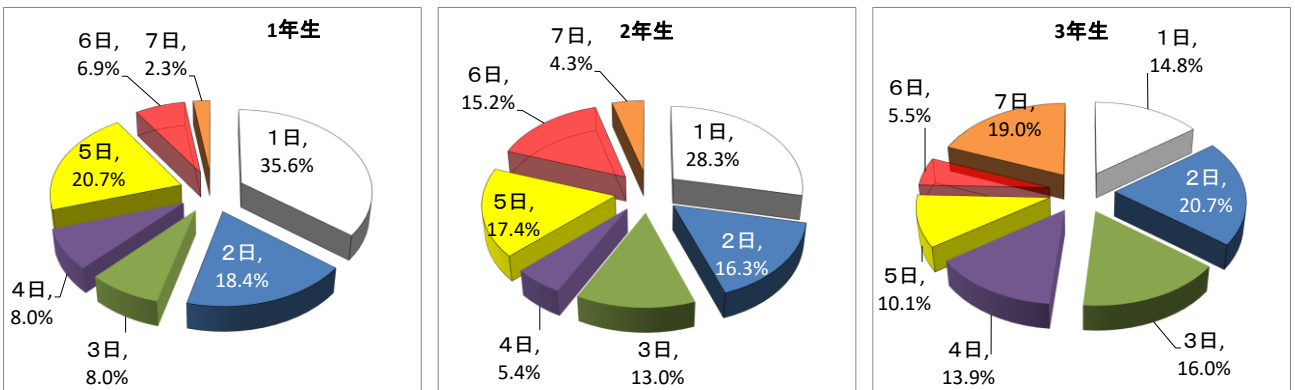
1 部活動加入状況



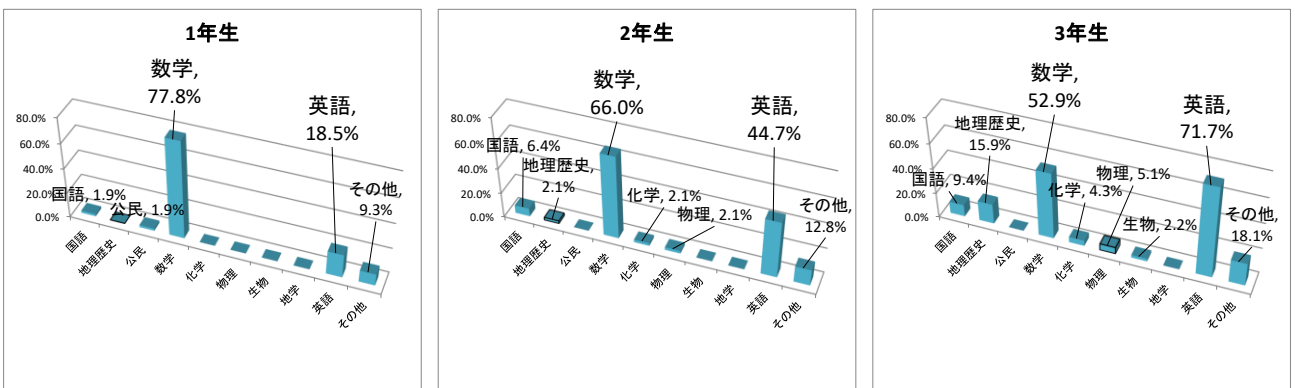
2 通塾率



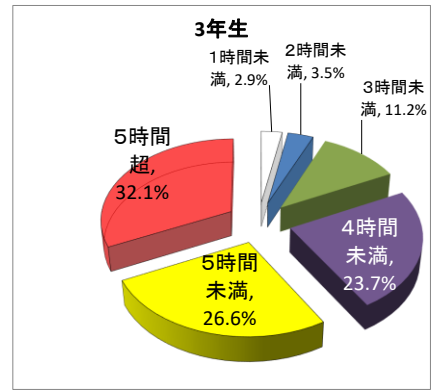
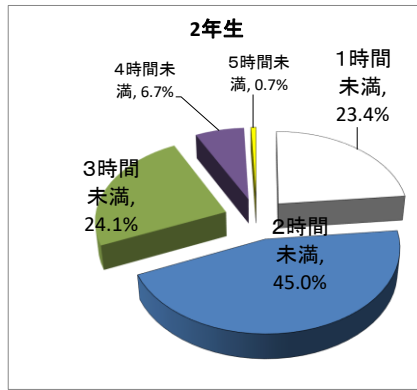
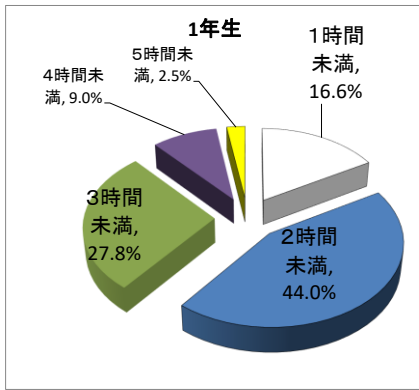
2-2 通塾者の週当たりの通塾日数



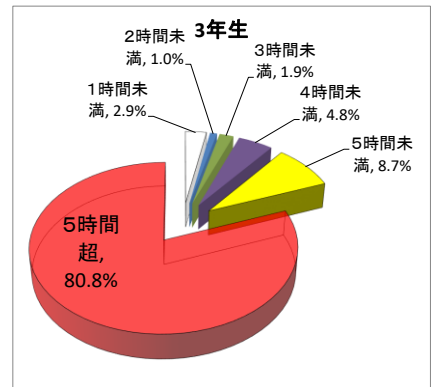
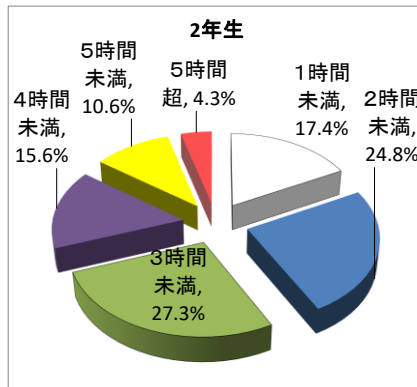
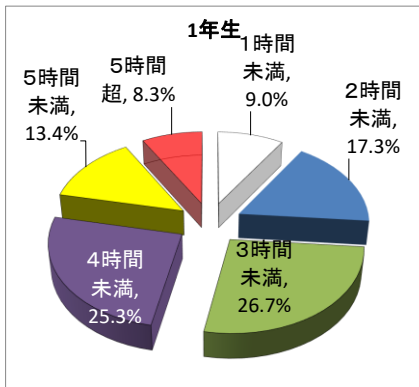
2-3 通塾者の受講教科・科目(複数回答)



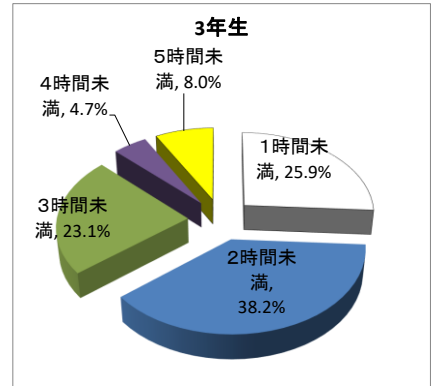
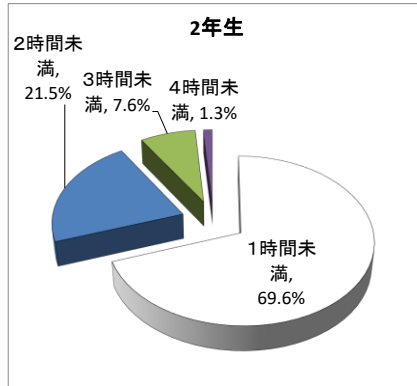
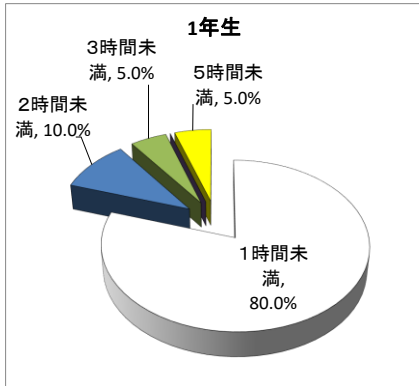
3 自学自習の時間 平日



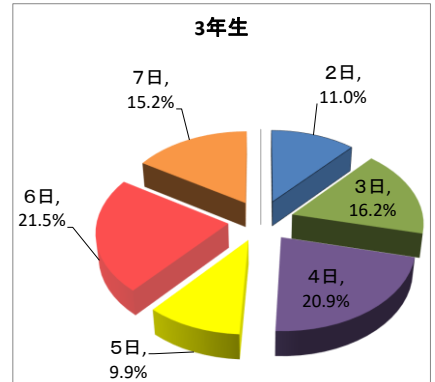
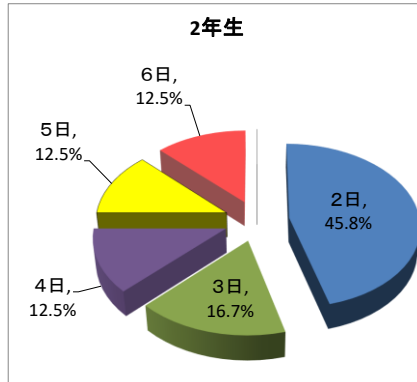
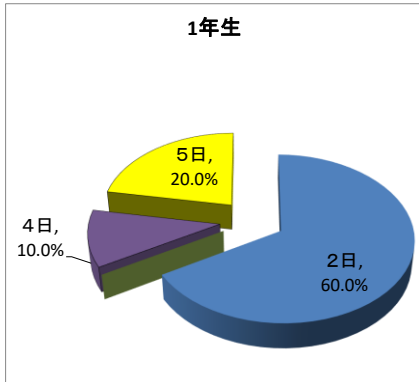
3-2 自学自習の時間 日曜・祝日



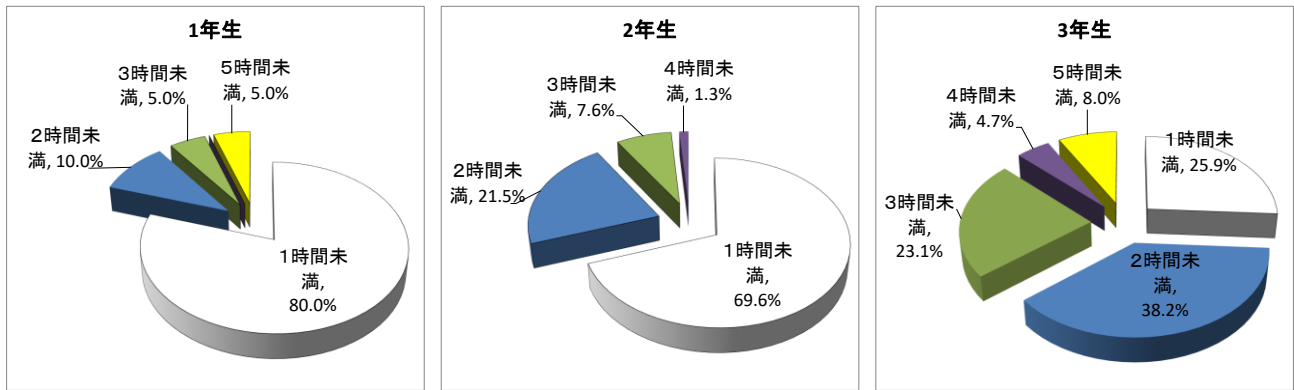
3-3 臨時休業期間中の自学自習の時間



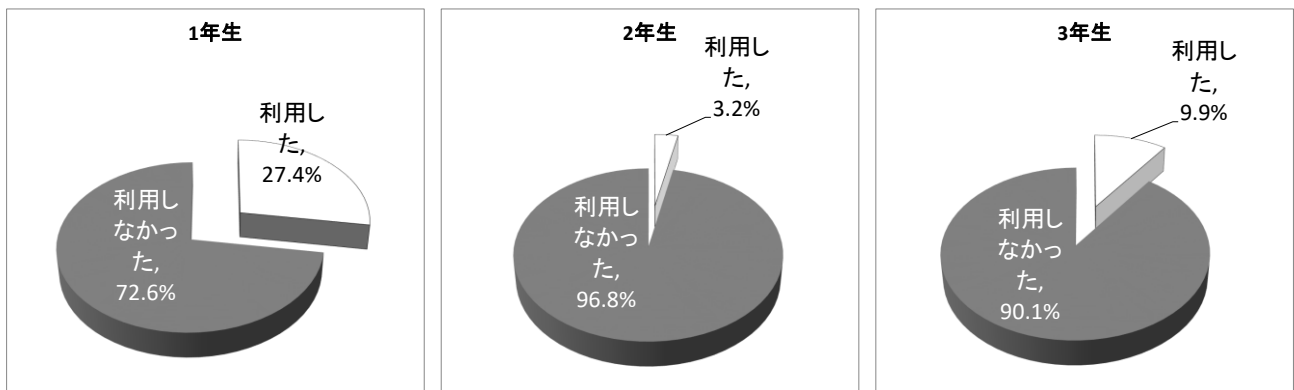
4 自習室利用者の週当たりの利用日数



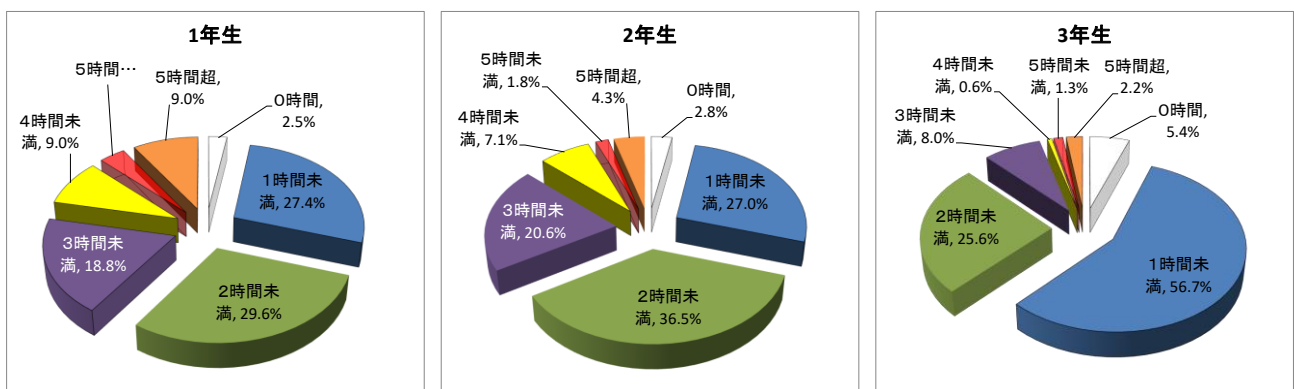
4-2 自習室利用者の過当たりの利用時間



4-3 オンライン自習室の利用状況



5 1日当たりのSNSの利用状況



5-2 SNSでのトラブル

